



# Sexually Transmitted Infections in Bermuda

2010-2014

Data presented in this report is based on a retrospective analysis of information collected through Bermuda's confidential communicable disease reporting system. Information is provided from a sentinel physicians, laboratories and Department of Health clinics. The data provided in this report is used to direct and evaluate preventive and other STI-related services.

## Department of Health STI Services

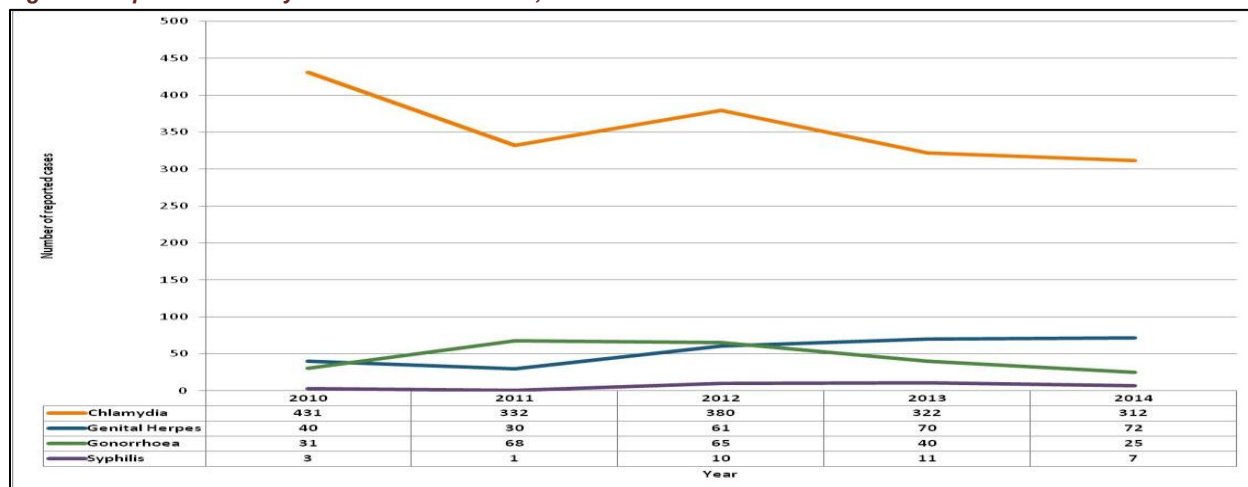
1. STI information through health education/promotion, annual reports, etc.
2. Confidential STI screening
3. Comprehensive treatment for persons with diagnosed STIs
4. Contact tracing

It is recognized that there is undiagnosed and/or unreported infection in Bermuda and so it should be noted that this report can only provide information on the *diagnosed and reported* cases. This report contains information on the selected sexually transmitted infections (chlamydia, genital herpes, gonorrhoea, and syphilis) received by the Epidemiology and Surveillance Unit from 1 January 2010 through 31 January 2015.

## Trends

**Figure 1** shows the annual number of reported cases of the selected sexually transmitted infections from 2010-2014. Over the past 5 years, there have been decreases in the overall number of reported cases of these selected STIs, mainly led by decreases in the number of reported chlamydia infections. **Tables 1-5** show the annual distribution of the selected sexually transmitted infections by age-group and gender from 2010-2014. Reported cases are generally higher in females than males, which is partly due to health-seeking behaviours. Overall, cases are most reported in adolescents and young adults (aged 15-24 years) followed by those aged 25-44 years. **Figures 2-6** show the detailed distribution of the selected sexually transmitted infections by age-group and gender for calendar year 2014.

**Figure 1. Reported Sexually Transmitted Infections, 2010-2014**



Epidemiology and Surveillance Unit  
Continental Building, 25 Church Street, Hamilton HM 12  
P.O. Box HM 1195, Hamilton HM EX, Bermuda

**Table 1. Selected Sexually Transmitted Infections, 2010**

	CHLAMYDIA (N = 431)		GENITAL HERPES (N= 40)		GONORRHOEA (N = 31)		SYPHILIS (N = 3)	
	#	%	#	%	#	%	#	%
AGE GROUP								
10-14	1	0.2%	0	0.0%	0	0.0%	0	0.0%
15-19	108	25.1%	3	7.5%	4	12.9%	0	0.0%
20-24	132	30.6%	6	15.0%	12	38.7%	0	0.0%
25-44	170	39.4%	20	50.0%	15	48.4%	3	100.0%
45-64	18	4.2%	10	25.0%	0	0.0%	0	0.0%
65+	0	0.0%	1	2.5%	0	0.0%	0	0.0%
Unspecified	2	0.5%	0	0.0%	0	0.0%	0	0.0%
GENDER								
Male	139	32.3%	16	40.0%	15	48.4%	2	66.7%
Female	291	67.5%	23	57.5%	16	51.6%	0	0.0%
Unspecified	0	0.0%	0	0.0%	0	0.0%	1	33.3%

**Table 2 Selected Sexually Transmitted Infections, 2011**

	CHLAMYDIA (N = 332)		GENITAL HERPES (N= 30)		GONORRHOEA (N = 68)		SYPHILIS (N = 1)	
	#	%	#	%	#	%	#	%
AGE GROUP								
10-14	5	1.5%	0	0.0%	1	1.5%	0	0.0%
15-19	75	22.6%	1	3.3%	26	38.2%	0	0.0%
20-24	107	32.2%	5	16.7%	15	22.1%	0	0.0%
25-44	126	38.0%	13	43.3%	24	35.3%	0	0.0%
45-64	10	3.0%	8	26.7%	1	1.5%	1	100.0%
65+	0	0.0%	1	3.3%	0	0.0%	0	0.0%
Unspecified	9	2.7%	2	6.7%	1	1.5%	0	0.0%
GENDER								
Male	81	24.4%	8	26.7%	28	41.2%	1	100.0%
Female	251	75.6%	22	73.3%	40	58.8%	0	0.0%
Unspecified	0	0.0%	0	0.0%	0	0.0%	0	0.0%

**Table 3 Selected Sexually Transmitted Infections, 2012**

	CHLAMYDIA (N = 380)		GENITAL HERPES (N= 61)		GONORRHOEA (N = 65)		SYPHILIS (N = 10)	
	#	%	#	%	#	%	#	%
AGE GROUP								
10-14	2	0.5%	0	0.0%	0	0.0%	0	0.0%
15-19	86	22.6%	8	13.1%	17	26.2%	0	0.0%
20-24	99	26.1%	11	18.0%	16	24.6%	0	0.0%
25-44	164	43.2%	27	44.3%	24	36.9%	5	50.0%
45-64	26	6.8%	10	16.4%	6	9.2%	4	40.0%
65+	2	0.5%	2	3.3%	1	1.5%	1	10.0%
Unspecified	1	0.3%	3	4.9%	1	1.5%	0	0.0%
GENDER								
Male	107	28.2%	14	23.0%	34	52.3%	9	90.0%
Female	273	71.8%	47	77.0%	31	47.7%	1	10.0%
Unspecified	0	0.0%	0	0.0%	0	0.0%	0	0.0%

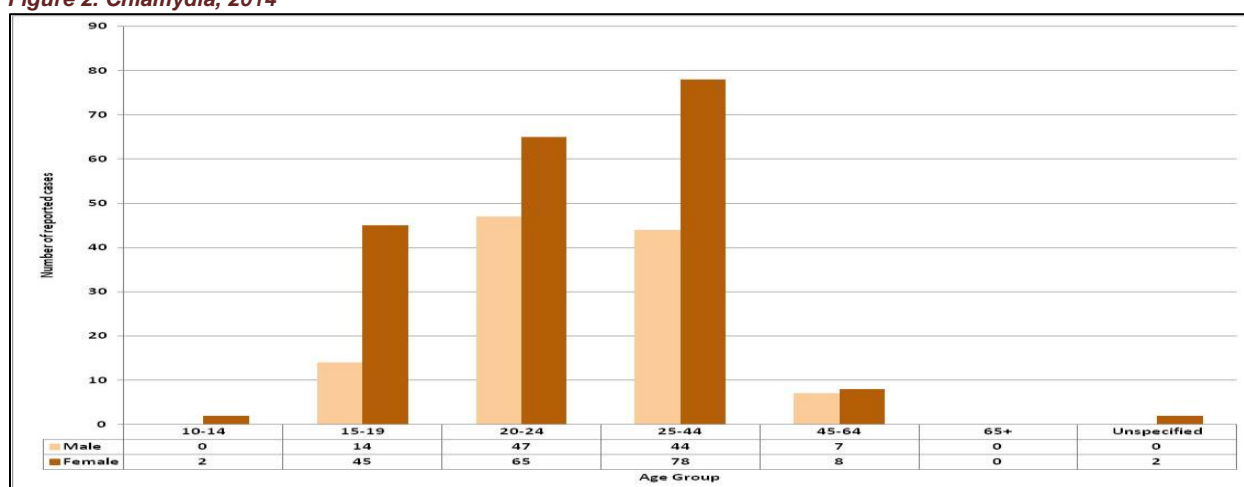
**Table 4 Selected Sexually Transmitted Infections, 2013**

	CHLAMYDIA (N = 322)		GENITAL HERPES (N= 70)		GONORRHOEA (N = 40)		SYPHILIS (N = 11)	
	#	%	#	%	#	%	#	%
AGE GROUP								
10-14	3	0.9%	0	0.0%	0	0.0%	0	0.0%
15-19	76	23.6%	3	4.3%	8	20.0%	0	0.0%
20-24	92	28.6%	8	11.4%	7	17.5%	1	9.1%
25-44	134	41.6%	31	44.3%	24	60.0%	3	27.3%
45-64	12	3.7%	19	27.1%	0	0.0%	6	54.5%
65+	1	0.3%	1	1.4%	0	0.0%	1	9.1%
Unspecified	4	1.2%	8	11.4%	1	2.5%	0	0.0%
GENDER								
Male	99	30.7%	22	31.4%	19	47.5%	8	72.7%
Female	223	69.3%	46	65.7%	20	50.0%	3	27.3%
Unspecified	0	0.0%	0	0.0%	1	2.5%	0	0.0%

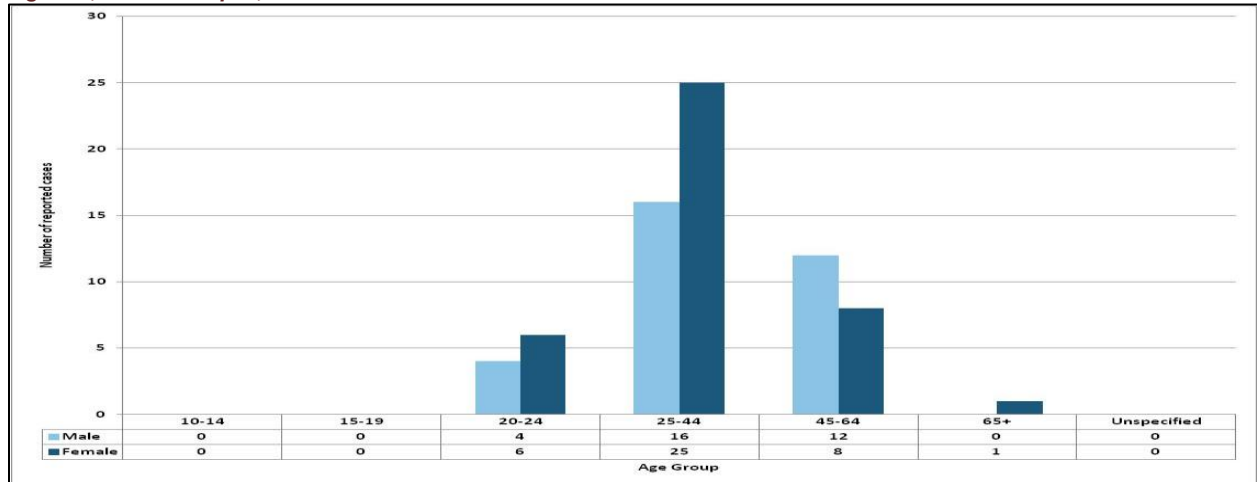
**Table 5 Selected Sexually Transmitted Infections, 2014**

	CHLAMYDIA (N = 312)		GENITAL HERPES (N= 72)		GONORRHOEA (N = 25)		SYPHILIS (N = 7)	
	#	%	#	%	#	%	#	%
AGE GROUP								
10-14	2	0.6%	0	0.0%	0	0.0%	0	0.0%
15-19	59	18.9%	0	0.0%	0	0.0%	0	0.0%
20-24	112	35.9%	10	13.9%	6	24.0%	0	0.0%
25-44	122	39.1%	41	56.9%	13	52.0%	3	42.9%
45-64	15	4.8%	20	27.8%	5	20.0%	3	42.9%
65+	0	0.0%	1	1.4%	1	4.0%	1	14.3%
Unspecified	2	0.6%	0	0.0%	0	0.0%	0	0.0%
GENDER								
Male	112	35.9%	32	44.4%	15	60.0%	4	57.1%
Female	200	64.1%	40	55.6%	10	40.0%	3	42.9%
Unspecified	0	0.0%	0	0.0%	0	0.0%	0	0.0%

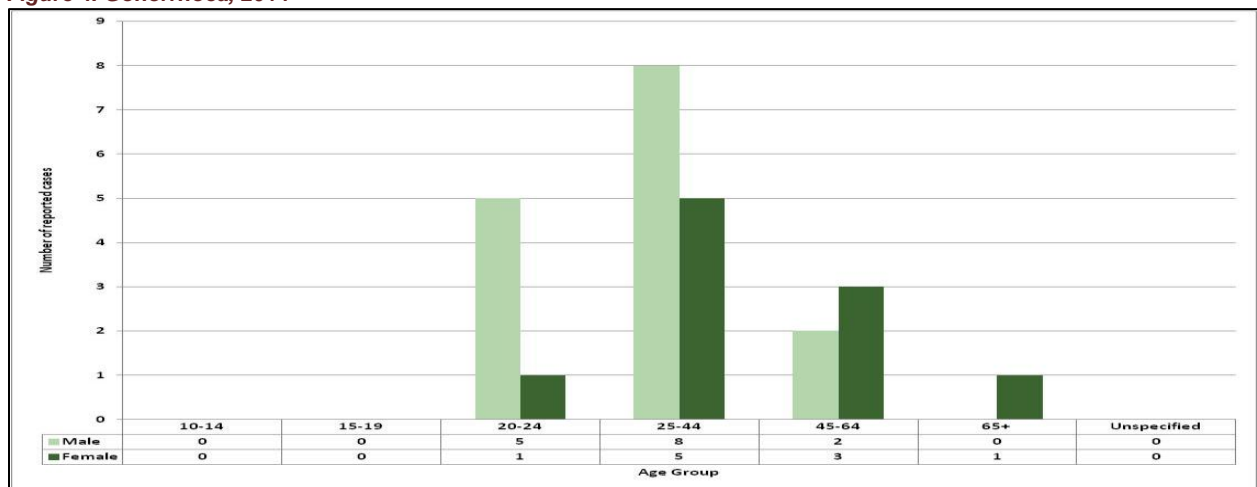
**Figure 2. Chlamydia, 2014**



**Figure 3. Genital Herpes, 2014**



**Figure 4. Gonorrhoea, 2014**



**Figure 5. Syphilis, 2014**

